



Household Use Only

# Stainless Steel Tumbler

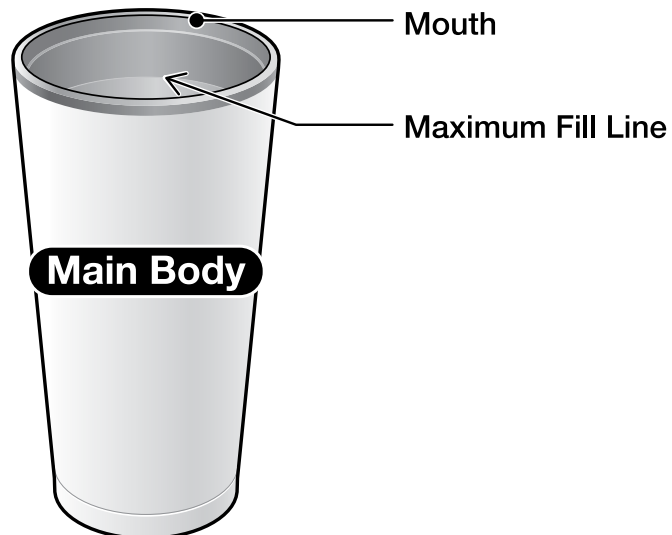
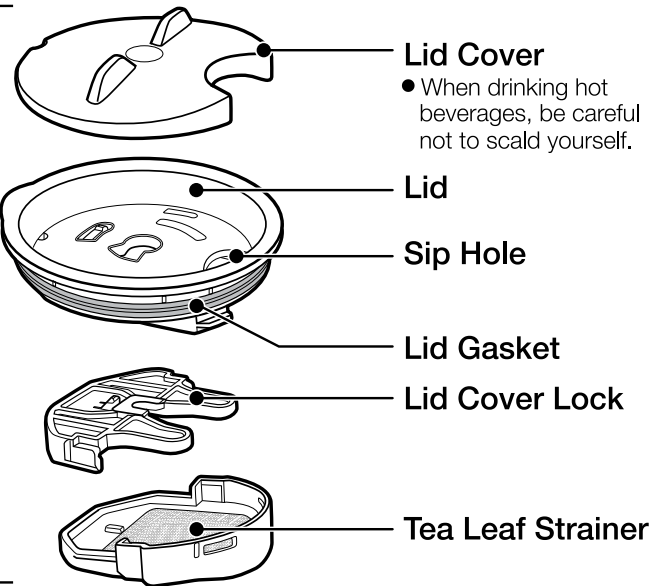
## Model No. SX-FSE

## Instruction Manual

- This product is not leak proof.
- Be sure that all parts are attached firmly before each use.
- The illustrations used in this instruction manual may vary from the actual product you have purchased.

### Name of Each Part

#### Lid Set


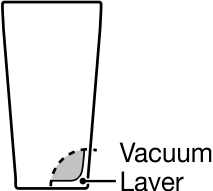





Please read these instructions before use, and keep for future reference.

SX-FSE(E/K/T/C) / D

## Important Safeguards

- Please follow these instructions to prevent scalding, deterioration and discoloration of beverages, as well as malfunction and staining of the Tumbler.

|  |   |
|--|---|
| <p><b>Keep out of the reach of infants and small children. Do not allow them to play with this product.</b><br/>Mishandling may cause injury or scalding.</p>  | <p><b>Do not under any circumstances remove the sticker on the bottom of the Main Body.</b><br/>Doing so may cause rust, holes, or other damage.</p>  <p>Sticker</p>   |
| <p><b>Do not tilt or shake the product, even when the Sip Hole is closed.</b><br/>The beverage may leak and cause scalding.</p>  | <p><b>Do not keep liquids in the Tumbler for long periods of time.</b><br/>Doing so may cause contents to spoil, degenerate, or produce an odor.</p>  |
| <p><b>Do not attach parts other than those specifically designed for this product.</b><br/>Doing so may cause leaks, scalding or breakage.</p>   | <p><b>When containing hot beverages:</b></p> <ul style="list-style-type: none"> <li>● <b>Be careful not to scald yourself when drinking out of the Tumbler.</b><br/>Due to its vacuum insulation, the outside of the Tumbler will not become hot, while hot beverages will remain very hot for many hours.</li> <li>● <b>The Sip Hole can get very hot; use caution when drinking hot beverages.</b></li> <li>● <b>When drinking beverages, drink slowly without tilting the Main Body suddenly.</b><br/>If you tilt the Main Body suddenly, the beverage may spill and cause burns.</li> <li>● <b>Do not shake the Tumbler.</b><br/>Doing so may cause injury or scalding.</li> <li>● <b>Do not turn on its side.</b><br/>Contents may leak and cause scalding or stains.</li> </ul> |
| <p><b>This Tumbler is for holding beverages and keeping them hot or cold.</b><br/>Please do not use for other than intended purposes.</p>  | <p><b>Do not under any circumstances use the Tumbler in a moving vehicle, such as a car or train, as doing so may cause it to tilt or fall.</b><br/>If the Main Body tilts or falls, contents may spill and cause burns or injuries.</p>  |
| <p><b>Do not place dry ice in the Tumbler.</b><br/>Doing so can be dangerous, as the liquids inside may spill out.</p>   | <p><b>Make sure that the Lid Cover, Lid, Lid Gasket, and Lid Cover Lock are securely attached before use. Always close the Sip Hole after use.</b><br/>Contents may leak and cause scalding or stains.</p>  |
| <p><b>Do not place in the freezer.</b><br/>Doing so may cause damage.</p>  | <p><b>Do not place near open flames (from gas stoves, etc.), on top of electric heaters or IH hot plates, or other IH cooking devices.</b><br/>Doing so may cause a fire or malfunction.</p>  |
| <p><b>Do not use if the Tumbler loses its heat retention properties.</b><br/>If hot beverages are poured inside, the outside of the Main Body may become very hot, which may cause burns.</p>  | <p><b>Do not fill the Main Body with beverages when the Lid Set is attached.</b><br/>The beverage may overflow and cause scalding.</p>  |
| <p><b>Do not use if water enters the interior of the Vacuum Layer.</b></p> <ul style="list-style-type: none"> <li>● If hot beverages are poured inside, the outside of the Main Body may become very hot, which may cause burns.</li> <li>● If the internal water seeps out, drinking it may cause illness.</li> </ul>  <p>Vacuum Layer</p> | <p><b>Do not place near heat sources such as gas stoves, ovens and heaters.</b><br/>Doing so may cause scalds, or damage or discoloration of the Tumbler.</p>   |
| <p><b>Do not disassemble the Main Body.</b></p>  | <p><b>Do not fill the Main Body above the Maximum Fill Line.</b><br/>Filling above the Line may cause contents to overflow or leak out afterwards.</p>  <p>Maximum Fill Line</p>   |
| <p><b>Do not heat in a microwave.</b><br/>Doing so may cause sparks, deform or discolor the Tumbler.</p>   | <p><b>Do not fill the Main Body above the Maximum Fill Line.</b><br/>Filling above the Line may cause contents to overflow or leak out afterwards.</p>  <p>Maximum Fill Line</p>   |
| <p><b>Do not fill the Main Body above the Maximum Fill Line.</b><br/>Filling above the Line may cause contents to overflow or leak out afterwards.</p>  <p>Maximum Fill Line</p>  | <p><b>Do not place near heat sources such as gas stoves, ovens and heaters.</b><br/>Doing so may cause scalds, or damage or discoloration of the Tumbler.</p>   |

## Important Safeguards continued

- Please follow these instructions to prevent scalding, deterioration and discoloration of beverages, as well as malfunction and staining of the Tumbler.

### Clean the Lid Set and Main Body after every use.

- Although the Main Body is made of 18/8 stainless steel, salt from foods such as soups and sports drinks may cause rust resulting in loss of thermal insulation.
- Not doing so may cause spoilage, mold, odors, and discoloration. It may also cause beverages to leak.
- Use a soft sponge or similar material when washing the Main Body so as not to damage the stainless steel.  
Damage to the stainless steel may cause rust, holes, or malfunction.

- The stainless steel body of the Tumbler may give off a metallic odor, however this is a normal property of stainless steel.

## Warnings & Cautions

|   |   |
|---|---|
| <p><b>Do not allow a hot kettle to touch the Mouth of the Main Body.</b></p> <p>If the Tumbler falls over, there is a risk of burns or other injuries. The Tumbler may also become damaged or deformed.</p>                                 | <p></p> <p><b>Do not attach the Lid Set with a tea bag inside the Main Body.</b><br/>The tea bag may expand and cause the beverage to leak or splatter.</p> <p><b>If you attach the Lid Set when there are tea leaves or other matter caught inside the Gasket, the beverage may leak.</b></p> |
| <p><b>After washing the Lid Set, shake it several times and then wipe off any remaining water before reassembling it.</b></p> <p>(See P.5 "Disassembling the Lid Set.")<br/>If water remains inside the Lid Set, droplets may leak out.</p> | <p><b>If using the Tumbler near delicate equipment, be very careful that it doesn't fall over. Do not carry the Tumbler while carrying delicate equipment.</b><br/>Spilling of the contents may damage the equipment. It may also cause burns, injuries, etc.</p>   |
| <p><b>Do not place cans or bottles inside the Main Body.</b><br/>Doing so may scratch the surface, causing deformations or other damage.</p>  | <p><b>If you place something with a strong odor in the Tumbler, the odor may be transferred.</b><br/>If the Tumbler has a strong odor, see P.8 "Troubleshooting Guide."</p>   |
| <p><b>Do not pierce the Tumbler with ice picks or other sharp objects.</b><br/>Doing so may cause damage and deterioration in heat and cold retention.</p>  | <p><b>Depending on the room temperature and the length of time the liquid is kept in the Tumbler, the heat and cold retention efficiency may vary.</b></p>  |
| <p><b>Do not scratch or rub the design on the outside of the Main Body using fingernails or hard objects.</b><br/>This may cause the design to come off.</p>  | <p><b>Never hold the Tumbler by the Lid Set when carrying it. Also, make sure that the Sip Hole is securely closed so that the contents do not spill.</b><br/>If the Tumbler is tilted or dropped, the contents may spill, which may cause burns or stain clothes.</p>  |
| <p><b>If using large ice cubes, do not force them into the Main Body.</b><br/>Doing so may cause deformation or damage to the Tumbler.</p>  | <p><b>Avoid dropping or hitting against hard surfaces.</b><br/>If the plastic parts are damaged or the Main Body is dented, the Tumbler's ability to retain temperature may deteriorate.</p>  |
| <p><b>If you keep hot tea in the Tumbler for an extended period of time, the tea will discolor. Drink tea as soon as possible after putting it in the Tumbler.</b></p>  |   |

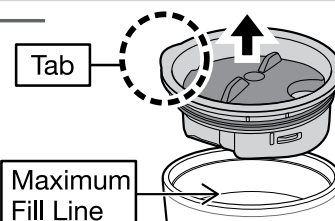
## How to Use ● Follow the instructions for care and wash the Lid Set and Main Body thoroughly before use.

This product is not leak proof.

Do not carry it in a bag or purse when it is filled with a beverage.

### 1 Remove the Lid Set from the Main Body.

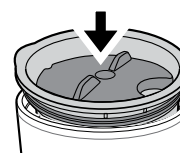
Lift the Tab on the Lid with your finger.



### 2 Fill the Main Body with a beverage, and reattach the Lid Set.

When using tea leaves, first add the tea leaves and then pour in the hot water before reattaching the Lid Set.

Securely attach the Lid Set by pushing it into the Main Body while rotating it slightly with the Sip Hole closed.

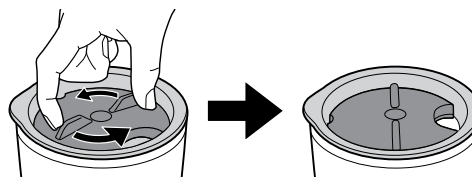


- Make sure that the Lid Gasket is attached correctly before use. Otherwise, the Lid Set may come loose while drinking. (See P.6 “Assembling the Lid Set.”)
- Only fill beverages up to the Maximum Fill Line.

When using to keep liquids warm or cold, first add a small amount of hot or cold water for about one minute to preheat or precool the Main Body. This increases the effectiveness of the heat or cold retention.

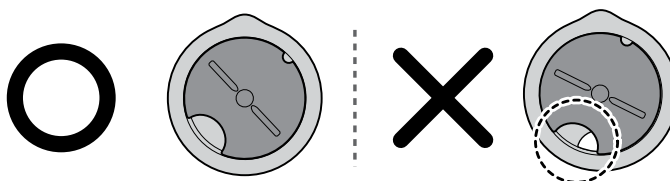
### 3 Drink the beverage.

Open the Sip Hole by rotating the Lid Cover before drinking.



- Do not tilt the Tumbler suddenly when drinking.  
(The beverage may spill and cause scalding or stain clothes.)

- After you are done drinking, close the Sip Hole with the Main Body in an upright position.

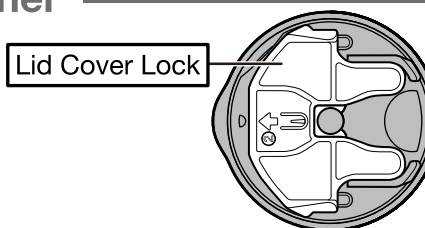


## Using without the Tea Leaf Strainer

You do not need to attach the Tea Leaf Strainer if you will not be using tea leaves.

### Always attach the Lid Cover Lock.

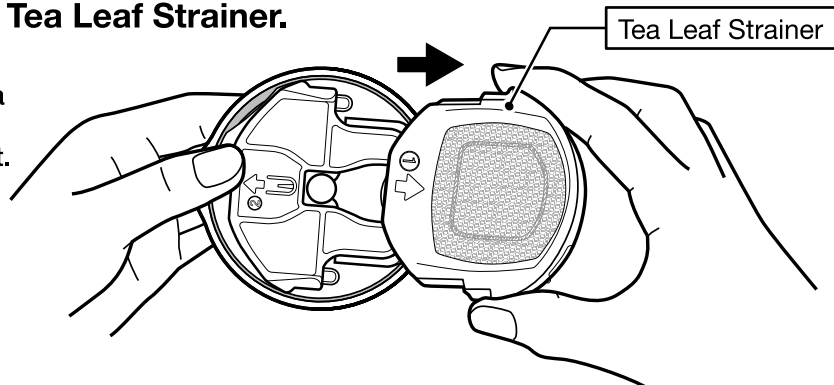
Otherwise, the Lid Cover may come loose and the beverage may leak, causing scalding.



## Disassembling the Lid Set

### 1 Remove the Tea Leaf Strainer.

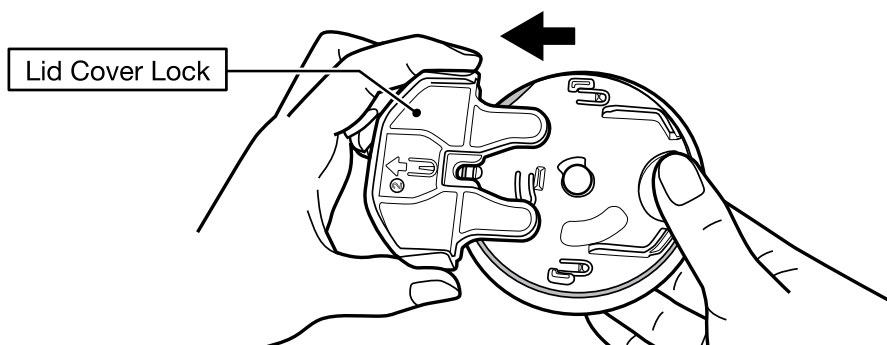
Remove the Tea Leaf Strainer from the Lid Set.



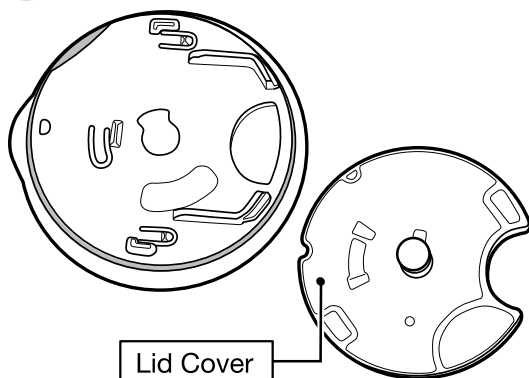
### 2 Remove the Lid Cover Lock.

Remove the Lid Cover Lock while holding down the Lid Cover.

- When removing the Lid Cover Lock, hold the Lid Cover down so that it does not come loose from the Lid and fall off.

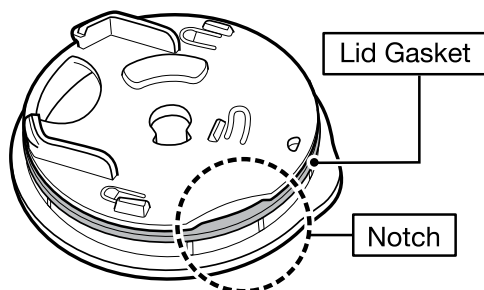


### 3 Remove the Lid Cover.



### 4 Remove the Lid Gasket.

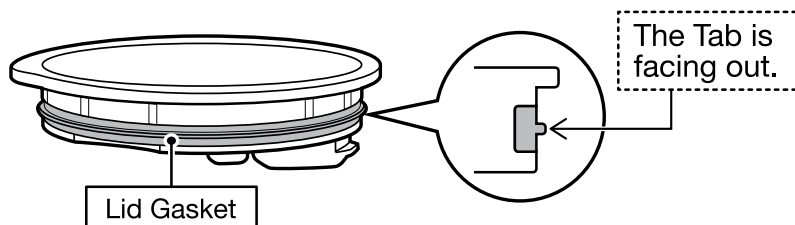
Remove the Lid Gasket starting from the Notch.



## Assembling the Lid Set

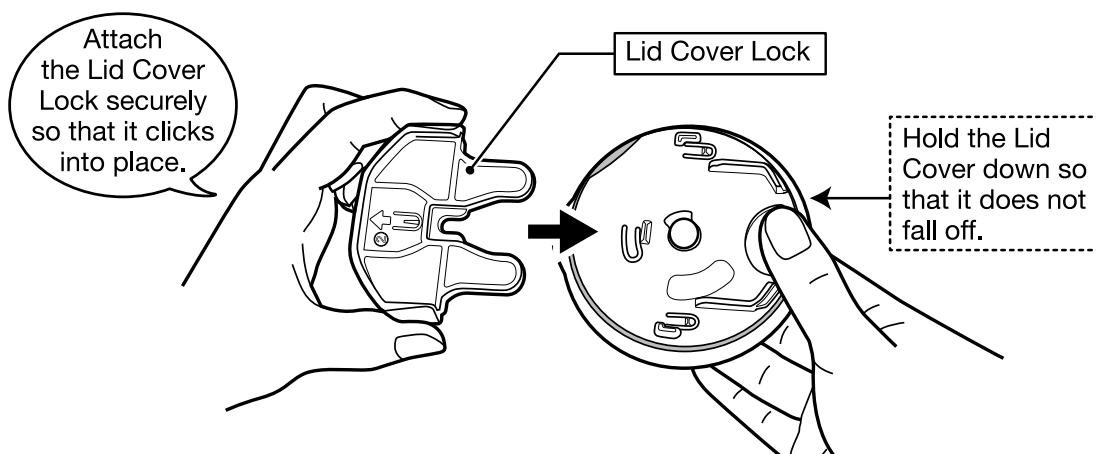
### 1 Attach the Lid Gasket.

Attach the Lid Gasket, making sure that the Tab is facing out.

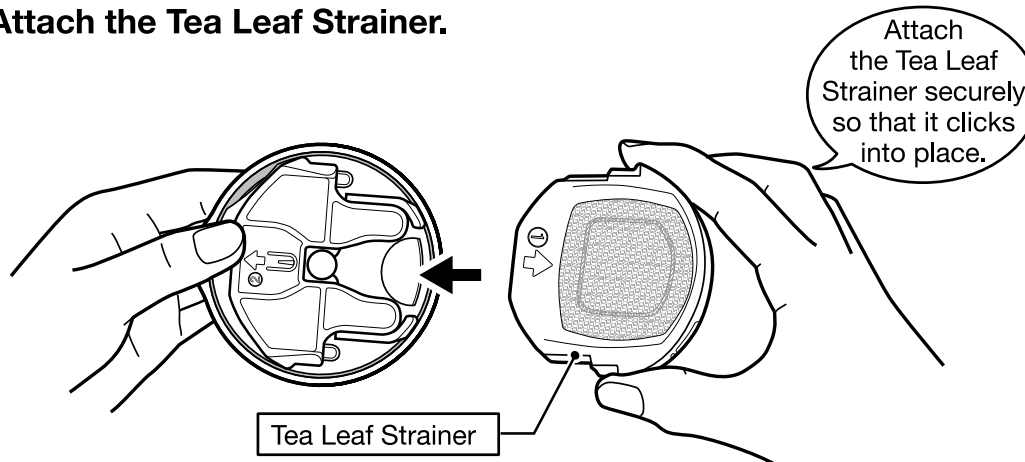


### 2 Attach the Lid Cover and Lid Cover Lock.

Insert the Lid Cover into the Lid, and attach the Lid Cover Lock while holding down the Lid Cover.



### 3 Attach the Tea Leaf Strainer.



## How to Take Care of Your Tumbler

- Clean the product after each use to prevent odors and mold, and to keep the product sanitary.

- Always disassemble the product before cleaning. (See P.5)

### Main Body, Lid Set

- ① Wash lightly in warm water and mild dishwashing liquid using a soft sponge.
  - ② Rinse, and then shake several times and wipe moisture out to dry thoroughly.
- Disassemble the Lid Set before washing and drying.
  - Use a small store-bought brush or similar implement for hard-to-clean areas.
  - Wipe off fingerprints with a dry cloth.

### When Cleaning Your Product:

- Do not use a dishwasher or dish-dryer. Do not boil to sanitize.
- Do not clean using paint thinner, metal wire scrub brushes, scrubbing brushes that include abrasive cleaners, polishing powders, cleansers, or any similar items.  
Doing so may damage the product.
- Do not use chlorine-based bleach. In addition, do not use any kind of bleach, even non-chlorine-based, to clean the outside of the Main Body. It may damage the paint, print, or stickers on the Main Body.
- Do not soak in water for an extended period of time.
- Wipe moisture off thoroughly to prevent water stains or rusting.
- If the product is not going to be used for an extended period, wash thoroughly with cold or lukewarm water and dry well. Store the product away from high temperatures and humidity.  
High temperatures and humidity may damage the product.

### To Remove Rust Spots and Water Stains:

You may find rust spots or water stains caused by impurities in the water. To remove these stains, fill the Main Body with hot water mixed with 10% vinegar and let it stand for 30 minutes to an hour without the Lid Set attached. Then, wash the interior thoroughly.  
(See “How to Take Care of Your Tumbler” above.)

### To Remove Coffee and Tea Stains:

To remove coffee and tea stains from the interior and the Lid Set, we recommend using Zojirushi's cleaning detergent SB-ZA01E. Always remove the Lid Set when using SB-ZA01E. Contact Zojirushi Customer Service or your local dealer for further information.

## How to Take Care of Your Tumbler

- Clean the product after each use to prevent odors and mold, and to keep the product sanitary.

### Replacing the Lid Set and Lid Gasket:

We take care in only using materials that are safe and hygienic for food contact. However, if plastic parts become damaged or its surface becomes rough, please replace them for optimum performance. The Lid and other consumable parts may need to be replaced due to time and wear. Please check them about once a year. When replacing parts, please record the model number and part name beforehand. Then contact either the store where you purchased the product or Zojirushi Customer Service. Replacement parts may be available for an additional charge.

## Troubleshooting Guide

| Problem   | Cause  | Solution   |
|---|--|--|
| The beverage, Lid Set, or inside of the Main Body smells bad. | Are you leaving liquids in the Main Body for long periods of time, that are causing tea stains or other stains on the inside of the Main Body? Or, did you fill the Main Body with a beverage that has a strong smell? | Wash the Main Body carefully. If the stains are hard to remove, use Zojirushi's cleaning detergent. (See P. 7 "How to Take Care of Your Tumbler.") |
| The Tumbler doesn't retain heat or cold.                      | Is the liquid you are placing in the Main Body hot or cold enough? Or, are you filling the Main Body with too little of the beverage?  | Fill the Main Body to the correct level with liquids that are hot or cold enough. (See P. 4 "How to Use.")   |
| Beverage leaks out of the Lid Set.                            | Is the Lid Gasket attached properly? Or, are you overfilling the Main Body?  | Securely attach the Lid Gasket. Also, do not fill the Main Body above the Maximum Fill Line. (See P. 4, P. 6)                                      |
| Tea leaves flow out from the Sip Hole.                        | There is a small gap between the Lid and the Tea Leaf Strainer so beverages flow out smoothly. The tea leaves may slip through this gap, and is not a malfunction.   |  |